

# Spring 2021

# Town Tidbits



## Radville Community Spotlight

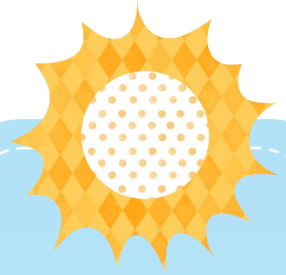
The Town of Radville has teamed up with Discover Weyburn and AM 1190 radio to showcase Radville and it's many opportunities and upcoming events.

Please go to the following link <https://www.discoverweyburn.com/radville-community-spotlight> to have a look at the Radville Community Spotlight page and check out what it has to offer.

If you are a local business or group that has an event you would like shared please go to the above noted link and create an account to start posting your events. Once you have created an account you can add your business information to show under the Radville Businesses tab.

Tune into AM 1190 at 8:50 a.m. during the Glenn Rogers show to listen to the Radville Community Spotlight.

If you have any questions or need assistance please call the Radville Town Office.



### Town of Radville

Box 339, 522 Healy Ave.

Phone: 306-869-2477

Fax: 306-869-3100

Email:

[town.radville@sasktel.net](mailto:town.radville@sasktel.net)

[town.radville2@sasktel.net](mailto:town.radville2@sasktel.net)

### Office Hours

Monday to Friday

8:00 a.m. – 12:00 p.m.

1:00 p.m. – 4:00 p.m.

### Waste Management Area Hours April through September

Monday 1:00 p.m. – 3:00 p.m.

Wednesday 5:00 p.m. – 7:00 p.m.

Saturday 11:00 a.m. – 4:00 p.m.

### Radville Public Library Hours

Tuesday, Wednesday and Thursday

10:00 a.m. – 1:00 p.m.

2:00 p.m. – 6:00 p.m.

### Upcoming Council Meetings

All meetings are held in the  
Council Chambers of the Town

Office at 7:00 p.m.

Monday, April 12

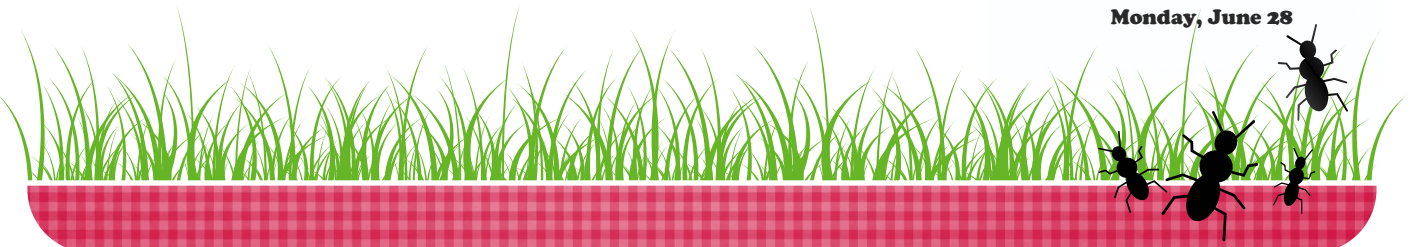
Monday, April 26

Monday, May 10

Tuesday, May 25

Monday, June 14

Monday, June 28



We are always looking for new ideas for our newsletter.

If there is something you would like to see in the newsletter please contact the Town Office, we would be happy to hear from you.

Local business directories are available on our website. If you are a local business and would like to be added to the town business directory please contact the Town Office.

Assessment notices were mailed mid February.

Appeals **MUST** be brought to the Town Office on or before April 16, 2021.

SAMA is the agency that defines the property assessment, therefore if you have questions regarding the assessed value of your property, please give them a call at 1-800-498-0575 or 1-306-848-2397.



## Friendly Reminders.....

- ◇ When Town employees are busy cleaning the streets or doing any other work on the streets, please take precautions when passing the Town equipment. If you happen to see the crews working on the streets please find an alternate route until the work is complete. For your safety and that of the staff please stay clear.
- ◇ Vehicles are not to be parked on the street for more than 48 hours. If your vehicle is not used regularly, you must park it on your own property.
- ◇ ATV's are NOT for recreational use within Town limits.
- ◇ Any resident who owns a dog/cat within Town limits must register their pets with the Town Office. Licenses are due January 1st of each year; the fee is \$20 for each animal, unless it is considered to be a restricted dog. Restricted dog license fees are \$250 per dog, please refer to Bylaw No. 2016-15 for a list of restricted dogs.
- ◇ Please be kind to you neighbours and those walking the streets and pick up after your pet.

### Did You Know???

- ◇ Tax and utility bills can be paid through online banking. Contact the Town Office to obtain your account numbers. Electronic payments are a convenient way to pay your bills, but are not instantaneous. Please allow 2-3 business days before any due date to avoid any penalty.
- ◇ In addition to e-billing utility and tax bills, we are now able to send e-receipts! If this is something of interest to you please email your request to [town.radville2@sasktel.net](mailto:town.radville2@sasktel.net).
- ◇ Utility bills are sent quarterly—end of March, June, September and December. If for any reason you do not receive your bill in the mail or by e-mail within the first week of the following month, notify the Town Office.

### **NOTIFY BY NETWORK**

To sign up for the **FREE** service, text "subscribe" to (306) 500-1919. Notifications for emergencies, reminders and important messages are provided through this service.

### Help Prevent the Spread of Dutch Elm Disease

- No pruning of elm trees from April 1st to August 31st.
- Never include elm tree branches with other branches
- Call the Town Office if you suspect a diseased elm tree.